



COMMUNITY BENEFITS & ENVIRONMENT
COMMUNITY BENEFITS

This £200m Project would be a substantial investment in the area and would deliver significant economic benefits for a period of at least 25 years.

- Creation of around 150-250 jobs during a 2-3 year construction period
- Creation of up to 15 permanent skilled jobs for on-going operation and maintenance of the facility
- Potential business opportunities for local suppliers

PPL will consult MSDC and SCC on ways to bring wider social and environmental benefits to the surrounding area.

ENVIRONMENT

PPL's steps to mitigate the impact of the Project on the local environment, during its construction, operation and maintenance, are a major part of the consultation and planning process.

Due to the nature and size of the Project, PPL is undertaking an Environmental Impact Assessment (EIA). The Project is classified as EIA development. The EIA considers the potential impacts, both positive and negative, of the Project. As part of the pre-application consultation materials on the proposed Project, PPL has published its interim findings of the EIA in the PEIR. These findings indicate the following key potential impacts, all of which will be mitigated through the final design process:

- transport - impact to the local network from construction traffic confined to the construction and decommissioning periods;
- air quality and emissions – resulting from construction activities, and during operation of the power generation plant;
- noise – potential increase in background noise during construction and operation within the vicinity of the site;
- visual impact and effects on cultural heritage setting – introduction of up to five 30m stacks and a new substation into the local landscape;
- local ecology – no anticipated negative impacts, but opportunity to improve local habitat through additional planting.



YOUR VIEWS?

The PEIR, along with a non-technical summary, is available to view at the locations listed on the 'Get in Touch' page. These documents can also be viewed on the Progress Power website.

YOUR VIEWS?

PPL would like to seek your views on:

- the Project, including the location and layout of the proposed power generation plant within the 10ha site;
- the options for the location and layout of the electrical connection compound;
- the route options of the gas connection;
- the findings of the preliminary environmental studies including construction and operation impacts.

PPL will do this via a number of ways:

- a series of exhibitions to be held in the local area. Members of the PPL team will be on hand to explain the Project in detail to you;
- a website provides information on the Project and offers you the opportunity to ask questions and make comments – www.progresspower.co.uk;
- local libraries will have a range of information, including the PEIR and the non-technical summary;
- a Freepost and email address where you can send questions or comments;
- meetings and briefings with local politicians.

For more information about the DCO Application Process, please visit the Planning Inspectorate's website: <http://infrastructure.planningportal.gov.uk>.



GET IN TOUCH

Information about the Project is available at:

LOCAL LIBRARIES (OPENING TIMES VARY)

- **Ipswich Library**, Northgate Street, Ipswich IP1 3DE 01473 263820
- **Diss Library**, Church Street, Diss IP22 4DD 01379 642609
- **Eye Library**, Buckshorn Lane, Eye IP23 7AX 01379 870515
- **Ixworth Library**, Village Hall, High Street, Ixworth IP31 2HH 01359 231493
- **Stradbroke Library**, Court House, Queens Street, Stradbroke IP21 5HG 01379 384768

EXHIBITIONS IN THE LOCAL AREA

- **Friday, 11 October 1430-1830**
Hoxne Village Hall, St Edmund's Hall, Goldbrook, Hoxne IP21 5AN
- **Saturday, 12 October 0900-1300**
Mellis Memorial Village Hall, Mellis Common, Mellis, IP23 8DW
- **Monday, 14 October 1600-2100**
The Park Hotel, 29 Denmark Street, Diss IP22 4LE
- **Tuesday, 15 October 1500-2000**
Cornwallis Arms, Rectory Road, Brome, Eye IP23 8AJ
- **Friday, 18 October 1200-1730**
Eye Community Centre, Magdalene Street, Eye IP23 7AJ
- **Saturday, 19 October 0900-1300**
Eye Community Centre, Magdalene Street, Eye IP23 7AJ

MID SUFFOLK DISTRICT COUNCIL

High Street, Needham Market IP8 8DL www.midsuffolk.gov.uk 01449 724500

HOW TO GET IN TOUCH

This consultation will end on 7 November 2013, and we would welcome your views on or before this date. Please include your name and an address. Responses may be made public, subject to data protection laws.

Website: www.progresspower.co.uk
Email: info@progresspower.co.uk
Telephone: 01603 417722
Freepost: Freepost RTEY-JYYB-ERSR,
 Progress Power Ltd, 49 York Place, Edinburgh, EH1 3JD



**Delivering energy
for the future**


THE PROJECT

Progress Power Limited (PPL) proposes to develop a gas-fired electricity generation project which includes a power generation plant and gas connection at the former Eye Airfield in Suffolk, together with an electrical connection and substation to connect the power generation plant to the existing nearby overhead transmission line (the Project). It would be capable of generating up to 299MW of electricity, enough to power the equivalent of 400,000 homes.

WHO IS PROGRESS POWER?

www.progresspower.co.uk

PPL is an energy development company established for the Eye Airfield project by Watt Power Limited of Edinburgh. Watt Power wishes to develop gas fired power plants at Eye and elsewhere in the UK to support the UK Government's drive to a low carbon economy.

PLANNING & PUBLIC CONSULTATION

The Project is classified as a Nationally Significant Infrastructure Project, which means that a Development Consent Order (DCO) is required to build, operate and maintain it. The DCO application will be processed and examined by the Planning Inspectorate who will make a recommendation to the Secretary of State for Energy and Climate Change (Secretary of State). The final decision on the application is made by the Secretary of State. It is possible that the electrical connection and substation will need to be consented separately from the DCO and not as part of the Project (this is subject to ongoing discussions with National Grid). At present it is PPL's intention and preference to include these elements in its proposed DCO application. Those responding to this consultation are requested to assume these elements will form part of the Project.

Consultation with local people, businesses, and organisations is an essential part of the DCO process and will help to influence the final designs of the Project.

PPL first shared its initial plans with the public at exhibitions held at Eye Community Centre in May 2013. At the exhibitions and since, PPL has received and responded to comments on its plans.

Several significant changes have occurred since the previous round of consultation including: a narrowed technology choice, a reduction to two route options for the gas connection corridor, confirmation that the electrical connection will be underground, a preliminary decision that PPL will apply for consent for the substation (rather than National Grid), a reduction in the maximum height of the stacks, a reduction of the footprint of the plant, and a reduction of building heights on the site.

Additionally, PPL has undertaken detailed technical and environmental studies, and associated design work to refine the design of the plant – this work is on-going.

THE NEED FOR GAS GENERATION

PPL is liaising closely with Mid Suffolk District Council (MSDC) and Suffolk County Council (SCC). It is also engaging with the Parish Councils in the area as well as organisations such as the Environment Agency, Natural England and English Heritage, to ensure that the plant will be designed, built, operated and maintained to the highest relevant and current safety and environmental standards.

For the purposes of pre-application consultation, PPL has prepared a Preliminary Environmental Information Report (PEIR) and a non-technical summary. These documents are described in more detail in the section on "Environment".

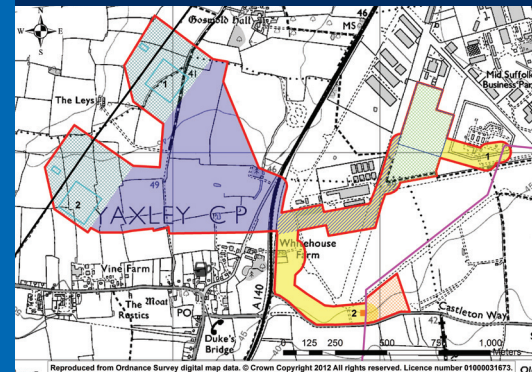
THE NEED FOR GAS GENERATION

The Government's policies in relation to Nationally Significant Infrastructure Projects are set out in National Policy Statements (NPSs). NPS EN-1 (Energy) states that "gas will continue to play an important role in the electricity sector – providing vital flexibility to support an increasing amount of low-carbon generation and to maintain security of supply."

Gas is a reliable fuel source. It is acknowledged by the Government as being essential to a low-carbon economy and to underpin the country's energy security. In addition, gas provides back-up to power generation from renewable sources, particularly wind power – which is an increasingly prevalent but intermittent energy source. Modern gas-fired power plants are among the most efficient and cleanest forms of electricity power generation. The need for the Project is established through the NPSs and is not a topic for consultation.

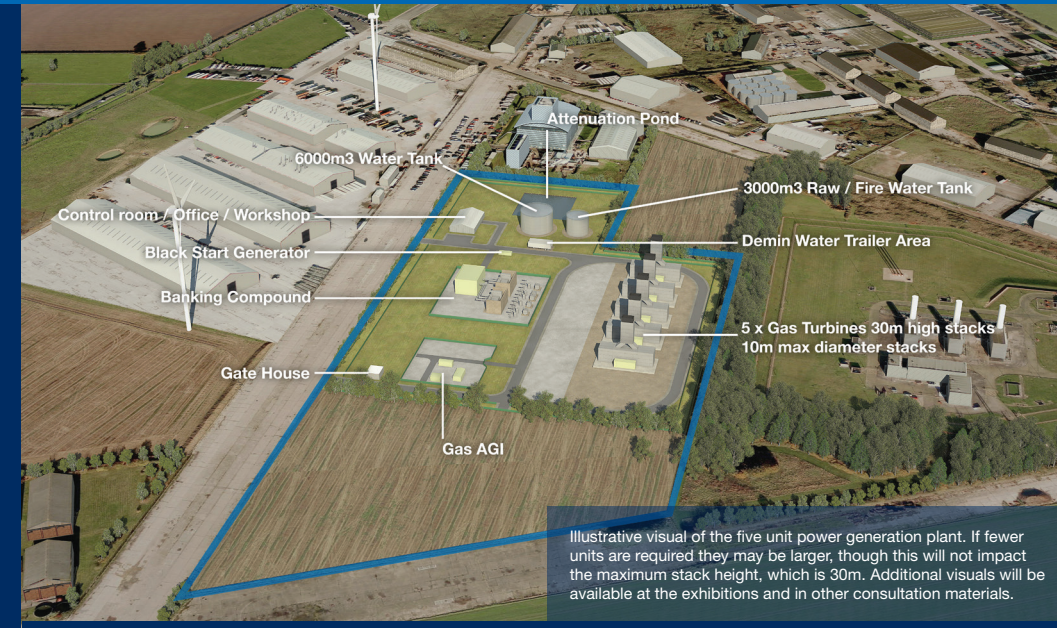
WHY EYE AIRFIELD? It has three advantages:

1. Proximity to the national gas and electricity transmission networks
2. National Grid encourages new power generation development in the region
3. MSDC is considering whether a part of the former Eye Airfield could be appropriate for energy-related use



Outline Map of the Project

- Proposed Redline Boundary (Incorporating alternative Options)
- 400kV Overhead Line
- National Gas Transmission System
- Power Generation Plant Area (Inc Laydown & Maintenance)
- Preliminary Preferred Location of the Power Generation Plant
- Substation & SEC Area Options 1 & 2 (Inc Laydown Area)
- Preliminary Preferred Locations for Substation & SEC Options 1 & 2
- Gas Above Ground Infrastructure for Option 2
- Gas Above Ground Infrastructure Laydown Area
- Electrical Connection Route Corridor Options
- Overlap between Electrical and Gas Connection Corridor Options
- Gas Connection Route Corridor Options 1 & 2



Illustrative visual of the five unit power generation plant. If fewer units are required they may be larger, though this will not impact the maximum stack height, which is 30m. Additional visuals will be available at the exhibitions and in other consultation materials.



Illustrative visual of the electrical connection compound.

THE PROJECT'S KEY DETAILS

The key details of the proposed Project are:

- the construction, operation and maintenance of a Simple Cycle Gas Turbine power generation plant capable of generating up to 299MW of electricity;
- the power generation plant will have up to five stacks, each up to 30m in height;
- the site for the power generation plant covers an area of approximately 10ha and is located within the Eye Airfield business and industrial estates. However, the footprint of the power generation plant would be smaller than the full site;
- the power generation plant is designed to provide back-up generation capacity which can operate flexibly to respond quickly and efficiently to both short-term variation in customer demand and intermittent output from renewable power generation. It is anticipated that it will operate for no more than 1500 hours per year;
- the power generation plant will produce electricity from natural gas;
- the proposed Project includes the construction, operation and maintenance of a new underground electrical connection together with a new substation and equipment (referred to as a sealing end compound) to connect the power generation plant to the existing nearby overhead power line which is part of the National Electricity Transmission System. The substation with dimensions approximately 160m x 150m, up to 12.5m in height and sealing end compound with dimensions approximately 45m x 25m, up to 10m in height are together referred to as the electrical connection compound;
- the proposed Project also includes the construction of a new underground pipeline to bring natural gas to the power generating plant from the National Gas Transmission System, located close to the site;
- subject to public consultation, planning and financing, the power generation plant could enter commercial operation in 2018;

At this stage the preferred route options for the gas and electricity connection corridors have yet to be finalised. The location and layout of the electrical connection compound have also to be finalised, although two possible areas of approximately 12ha have been identified, and preliminary preferred locations for the electrical connection compound site identified within each site. Continued consultation and environmental assessment on the connection route options and possible electrical connection compound sites is required before each can be confirmed. In addition, although a preliminary preferred location of the power generation plant within the 10ha site has been identified, the final location and layout are yet to be determined.

FREEPOST RESPONSE FORM

(Please complete in BLOCK CAPITALS)

Please post free of charge by 7 November 2013 to Progress Power Ltd via Freepost RTEY-JYYB-ERSR, Progress Power Ltd, 49 York Place, Edinburgh, EH1 3JD.

Name: _____
Address: _____
Email: _____

I plan to attend the following exhibition events:

Eye Community Centre Hoxne St Edmund's Village Hall
Mellis Memorial Village Hall The Park Hotel, Diss
Cornwallis Arms, Brome

Did you comment during the previous phase of consultation?

Yes No, I wasn't aware of the Project
No, I didn't comment for another reason

We have since taken into account further information and prepared a Preliminary Environmental Information Report that identifies potential benefits and impact. Do you have any comments on our findings?

If you have any comments about our Project, including the options for the gas connection route and the possible sites for the electrical connection compound, or any other information we should be aware of, please share below.

How do you feel about this proposal to build the Project?

Supportive Neutral
Opposed Undecided

If you wish to provide further comment about the Project, please continue on additional sheets and forward to the freepost address or contact us via our email address info@progresspower.co.uk. Thank you.